

ENGAGEMENT IN ACTION

Examples of collaborative activities

The CDH Family Physician Workforce Engagement project supports ongoing engagement with medical leadership on issues and planning for new/pending inpatient care models, IHealth, and topics that affect the family physician work environment at CDH.

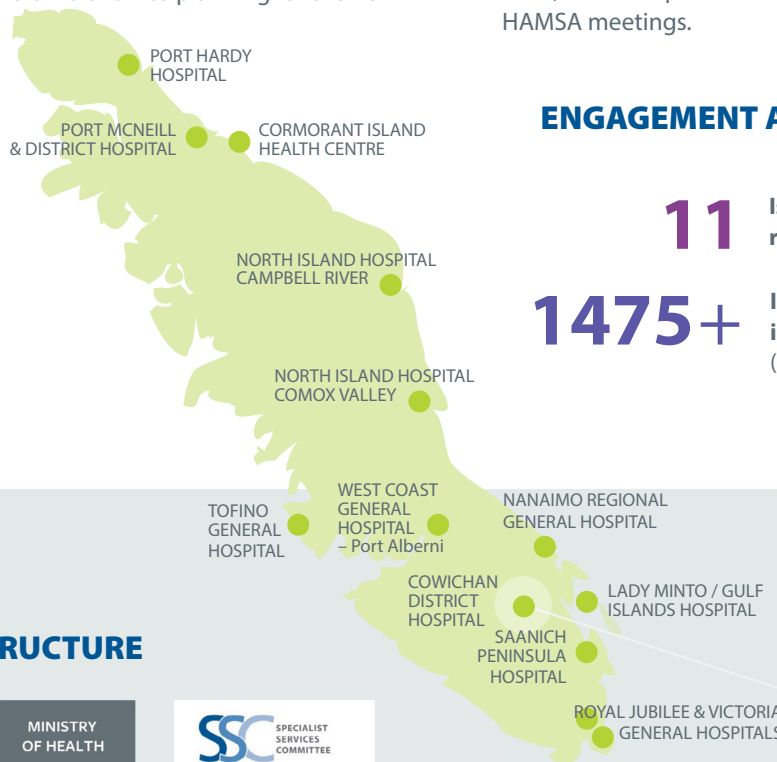
The CDH MSA Recruitment and Retention Committee is collaborating with hospital departments, Island Health, and the Division of Family Practice to identify barriers to recruitment; coordinate a “red carpet” welcome for potential recruits; and create an orientation checklist and credentialing road map for new hires.

CDH Redevelopment Physician Engagement User Groups in partnership with Island Health, have facilitated physician input from all departments and divisions into planning for the new hospital.

CDH Emergency Department (ED) physicians are participating in **planning for the new hospital ED design**, by reviewing flow and care models; identifying systems for a flexible, resilient, patient-centered department; analysing ED/Psych staffing needs, and mapping procurement processes.

The **regional IHealth Council and CDH MSA** are collaborating to support Cerner Electronic Health Record implementation, with a dedicated physician liaison, two-way communication, medical staff learning opportunities, and processes to support and elevate issues.

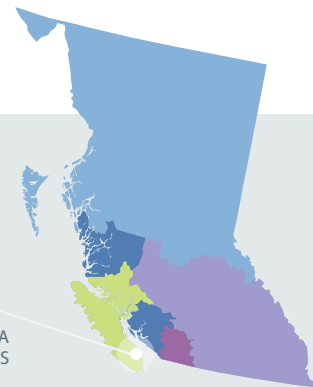
The **regional Vancouver Island Presidents’ Network** which includes the CDH MSA, has grown as a space for physicians to set region-wide, common priorities and speak with one voice at HAMAC and HAMSA meetings.



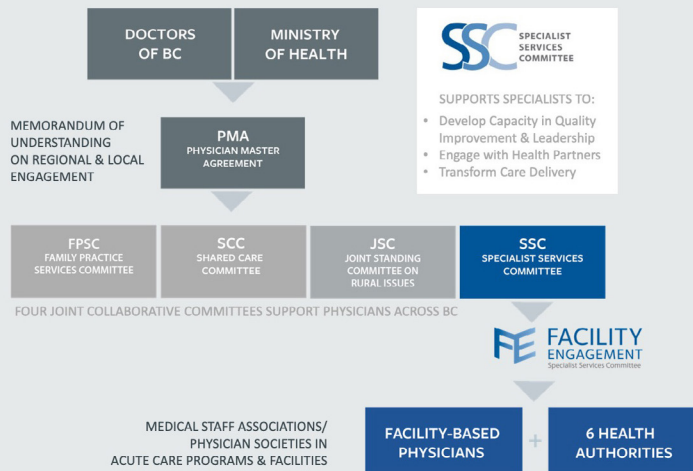
ENGAGEMENT ACROSS ISLAND HEALTH

11 Island Health MSAs representing 23 facilities

1475+ Island Health physicians involved in key activities (2016-2023)



PROVINCIAL STRUCTURE



One of the really big positives of working together was turning this opportunity into something that wasn't just a change – but actually a chance to fundamentally change, for the better, the way we deliver care.

— Dr Ryan Gallagher, Cowichan District Hospital Physician Leader, IHealth Implementation

Facility Engagement is a BC-wide initiative of the Specialist Services Committee. It supports meaningful consultation and collaboration among facility-based medical staff and health authorities.

It is strengthening communication and relationships and creating effective processes for working together on shared priorities that improve patient care and the work environment.



WHY ENGAGE?

For our patients. Strong engagement among physicians and health organizations supports high quality health care, improving patient outcomes and lowering costs.

For effective change. When we work together, we solve problems faster, make better decisions, and achieve more.

WHAT ARE WE WORKING ON?

- Patient care delivery
- Hospital pressures
- Regional and system challenges
- Wellness and workplace culture

HOW DOES IT WORK?

A COMMITMENT TO LOCAL AND REGIONAL ENGAGEMENT

is shared by Doctors of BC, the Ministry of Health, and all BC health authorities as part of the Physician Master Agreement.

FUNDING AND SUPPORTS

from the SSC Facility Engagement Initiative support medical staff to engage in health care planning and decisions.

WHO'S ENGAGING?

PHYSICIANS & OTHER MEDICAL STAFF HEALTH AUTHORITY LEADERS & ADMINISTRATORS

76

MEDICAL STAFF ASSOCIATIONS
in 85 acute care facilities
and 6 provincial programs

6

HEALTH AUTHORITIES
Local, regional levels

6500+ PHYSICIANS
have participated since 2014